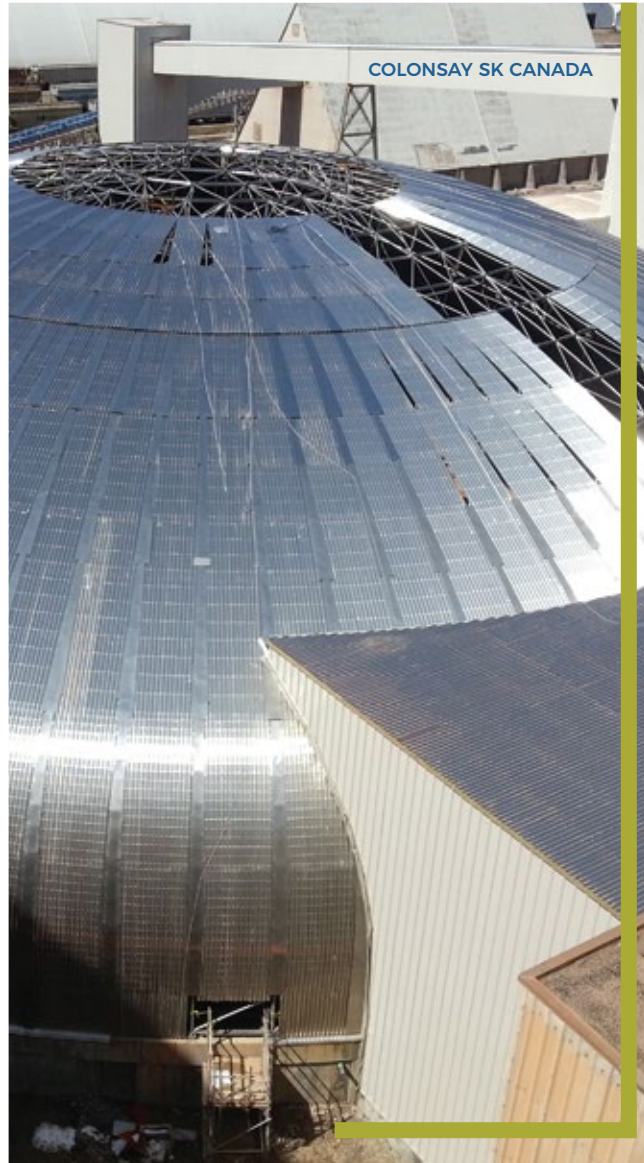


VAL D'OR QC, CANADA



Colonsay Potash Thickener Plant Dome

Located in Saskatchewan, the fertilizer thickener plant project required a 73m diameter dome. Fully made of stainless steel due to the high corrosiveness of potash, Triodetic is the only company in the world that manufactures aluminum, steel and stainless-steel domes, to withstand different corrosive environments.



Goldex Mine Dome

The 62m diameter stockpile dome was the first project carried out in Quebec. A second dome was later installed in Val d'Or at Lamaque Gold Mine.

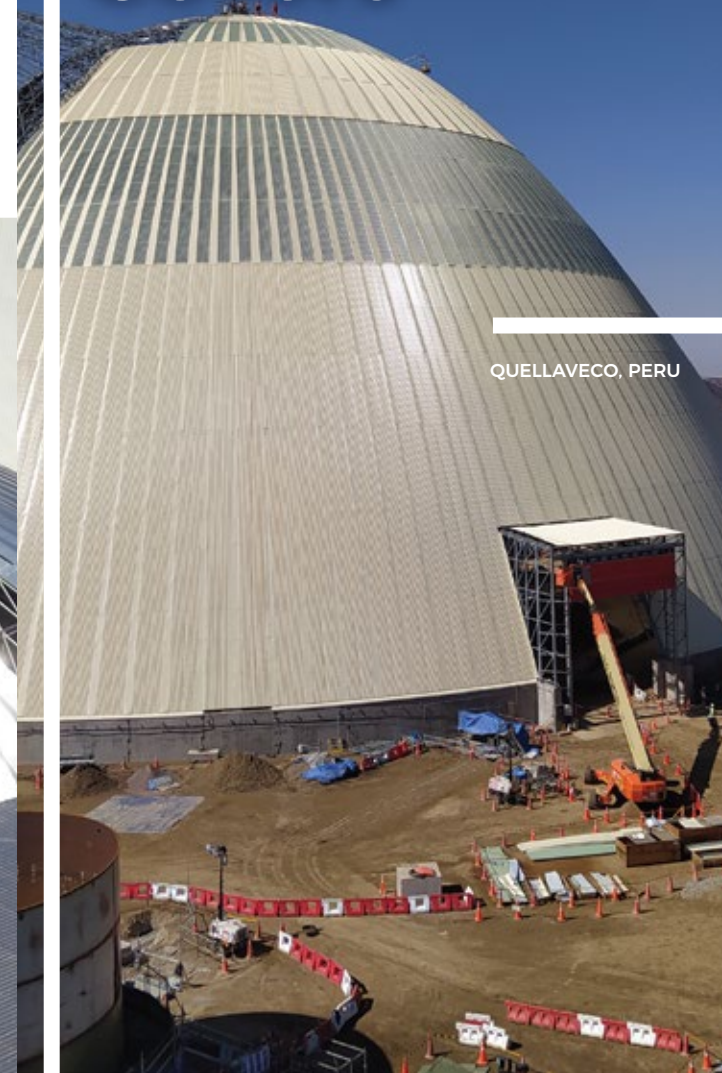
Highland Valley Copper Mine Domes

One of Triodetic's signature projects, the Mine is close to the city of Kamloops in British Columbia. The challenge consisted of designing, engineering, manufacturing and installing 3 (three) - 105m diameter domes, side by side, on a sloped site, while the mineral stockpiles were operating.

LOGAN LAKE BC, CANADA



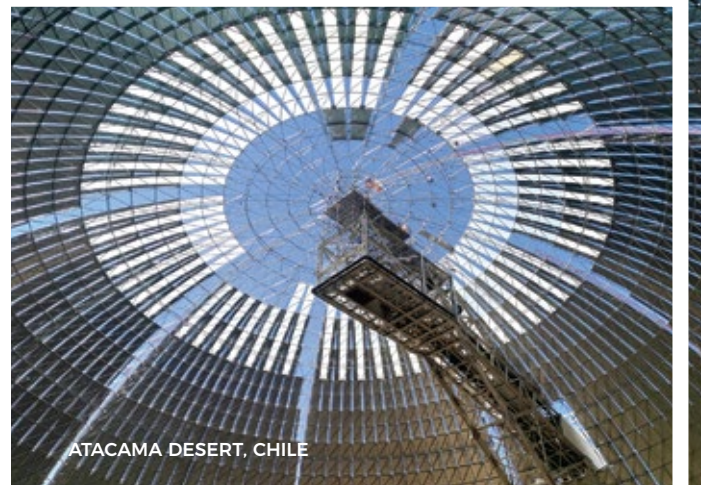
Industrial Covers



Canadian Designed, Engineered & Manufactured

Since 1962, Triodetic has been an internationally recognized leader in industrial applications to protect processing equipment, store materials, minimize dust problems and explosion risks. Ideal for mining, cement, coal and port facilities.

Triodetic custom designs, engineers and manufactures its industrial covers in-house at its facility in Canada—meeting all topographical challenges, load requirements and international building codes—using 100% North American aluminum and steel.



Spence Copper Mine Dome

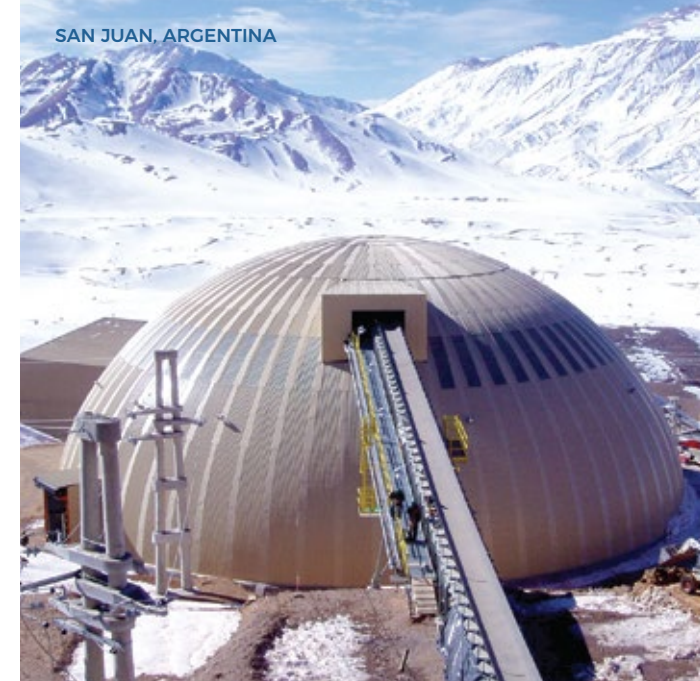
Located in Northern Chile, Triodetic supplied the Mine with a 110m diameter stockpile dome. Environmental legislation in Chile requires mining companies to cover their mineral stockpile in order to contain and prevent dust pollution from affecting the worksite, nearby communities and towns, flora and fauna.

Spence Copper Mine Filter Plant Pillow Dome

Located in Northern Chile, Triodetic engineered an 80m wide x 60m long pillow-shaped cover for the Mine's Copper Filter Plant. Despite the design complexity, the installation was efficient and fast. The speed of installation was assisted by sections being pre-assembled on the ground before lifted into place by cranes.



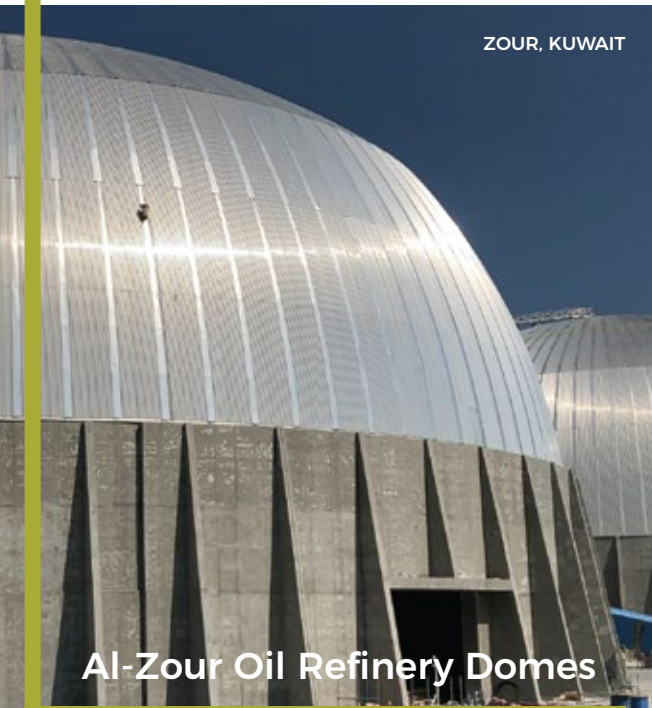
SAN JUAN, ARGENTINA



Veladero Gold Mine Dome

At an altitude of 4,200 meters above sea level, located in the Andean Mountains in North-Western Argentina, this was Triodetic's first Argentinian project. One of the peculiarities of the design of this 57m diameter dome, is that the conveyor which comes in through the side, is supported by the dome apex and not external support towers. A second dome was later installed in Argentina at Pirquitas Mine in the Province of Jujuy.

ZOUR, KUWAIT



Al-Zour Oil Refinery Domes

The oil refinery is located on the Persian Gulf. The Port Facility Project consisted of two 88m diameter aluminum domes. Aluminum was chosen because of the corrosiveness of sulfur.



613.623.3434